



An endeavour of Kunal Construction
a synonym for trust

CREDITS

Developers
Kunal Construction

Architect
Uneven
www.uneven.in

Structural Consultant
Comten Engineers, Vadodara
comten@rediffmail.com

Site Address
Kunal Heights,
Near Kens Villa, Nr. Ramosana Circle, NH No. 8,
Mahesana-Palanpur Highway, Mahesana.

Vishnubhai Patel (VK) | Kunal 98255 33221
Pankaj 98250 69146 | Vilish 99255 98855

THINK PURE



Affordable 2&3 Bhk Apartments



A unique experience in healthy and pure living



Well come to a home you always dream about...

Welcome to the splendor fit for the royalty.
Welcome to classic luxury.

Layout Plan



Tower K			Tower U		
101	102	103	101	102	103
201	202	203	201	202	203
301	302	303	301	302	303
401	402	403	401	402	403
501	502	503	501	502	503
601	602	603	601	602	603
701	702	703			

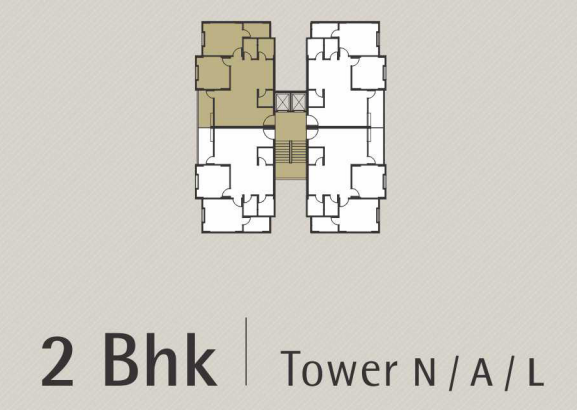
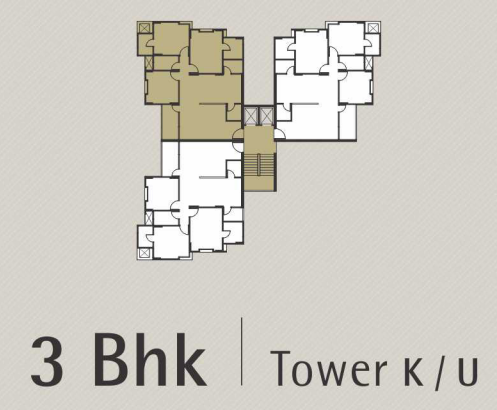
Tower N				Tower A				Tower L			
101	102	103	104	101	102	103	104	101	102	103	104
201	202	203	204	201	202	203	204	201	202	203	204
301	302	303	304	301	302	303	304	301	302	303	304
401	402	403	404	401	402	403	404	401	402	403	404
501	502	503	504	501	502	503	504	501	502	503	504
601	602	603	604	601	602	603	604	601	602	603	604
701	702	703	704	701	702	703	704	701	702	703	704
801	802	803	804	801	802	803	804	801	802	803	804
901	903	903	904	901	903	903	904	901	903	903	904



Typical Floor Plans - 3 Bhk



Typical Floor Plans - 2 Bhk



This project provides you much more than a materialistic pleasure of life. Here you will find planning and design in perfect co-ordination with nature creating an evergreen & beautiful environment. Live here at 'KUNAL HEIGHTS' is 'PURE' as it should be.



SPECIFICATIONS

Structure:
Earthquake resisting R.C.C frame structure.

Wall Finish:
Internal wall with mala plaster & external surface with double coat sand face plaster/Texture finish.

Flooring:
Vitrified tiles flooring in all rooms.

Toilets:
Designer bathrooms with premium fittings & Vessels.

Plumbing:
Concealed plumbing with Jaquar or equivalent C.P fittings.

Doors & Windows:
Elegant main door & Internal laminated waterproof flush door. Fully glazed aluminum windows with stone sill and jambs.

Paint:
White cement putty for interior walls and Apex or equivalent for external surfaces.

Kitchen:
Granite platform with standard quality S.S. Sink. Designer tile dado up to lintel level.

Electrification:
Single-phase ISI copper concealed wiring with modular switches. Provision of split A.C. in all Bedrooms.

Telephone points in all rooms.

CONTEMPORARY AMENITIES

- Club House
- Gymnasium
- A.V.room with Projector & Screen
- Indoor Games
- Land Scape Garden
- Covered Parking
- RCC Road with Paving on sides (dust free environment)
- 24 Hrs water supply
- Stand by Generator backup for lifts
- Decorative entrance lobby to each Apartment with name plate
- Elegant entrance gate & compound wall with security cabin
- Splash Pool
- Children Park
- Senior Citizen sit out
- Rain Water Harvesting
- Service Apartment for Guest (on terrace)
- Underground Cabling for power supply (cable free environment)
- Decorative street lighting.





What we sell is and Satisfaction
What we earn is Trust

Special note:

- No deduction will be given in bill for any changes/ alteration made in specifications by the client.
- Stamp duty, registration, maintenance, direct/indirect government taxes (service tax, municipal tax, MGVC deposits etc...), existing & applicable shall be born by the client/ member.
- Developer reserve the rights to change the specification/design at any stage of work(development) without prior notice to member & such changes bind to all the members.
- Payment of all extra work other than specified has to be paid in advance by the member before executing work.
- Interest at 24% per annum shall be applied on delayed payments or cancellation.
- Administrative expence of rs. 25000.00 and amount of extra work (if any) will be deducted from the refund amount of cancellation and refund of final amount (after deduction) will be given within 90 days of new booking.
- This brochure is just for presentation & it is not a part of legal document.